

# TASK FORCE MAPPING EXERCISE



## LET'S DESIGN BIG ELK CREEK STATE PARK!



### DIRECTIONS

Let's work together to design, protect, and preserve Big Elk Creek State Park. Below is a **kit of parts** - the basic pieces and parts needed to make a park for all to enjoy.

Simply cut out the parts, use the provided adhesive dots, and work with your group to design Big Elk Creek State Park!

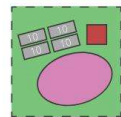
### GET OUT YOUR MARKERS!

Other things you may want to draw:

- Trail routes
- Special/sacred spaces
- Important viewsheds

What else is important to preserve/protect?  
Anything else we might be missing?

### KIT OF PARTS



✂ INCLUDE (1)

#### EDUCATION AND ADMINISTRATIVE SPACE (VISITOR CENTER PARK OFFICE)

- ± 4,500 SF building for park operations & management
- Visitor information
- ± 3.5 acre site includes parking lot & day-use



✂ INCLUDE (1-2)

#### DAY-USE

- ± 1.5 acre site for gathering and play; could include amenities like scenic overlooks, pavilion, playground, etc.



✂ INCLUDE # APPROPRIATE, IF ANY

#### PARKING LOT

- Associated with trail heads, day-use areas, primary park entrances
- Each "box" represents 10 spaces



#### MAINTENANCE

- ≈2,550 sf for park maintenance equipment and storage



#### WATER CROSSING (for trails, etc.)



#### WATER ACCESS



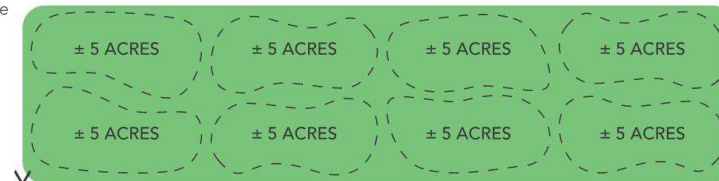
#### SITE OF CULTURAL OR HISTORICAL SIGNIFICANCE



#### OTHER IMPORTANT PLACE(S)

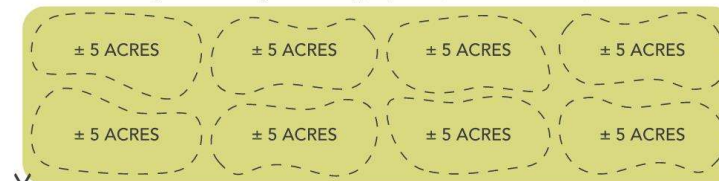
#### FOREST RESTORATION

- Designate area(s) for restoring native forest habitat
- Use as many or as few as you feel is appropriate (more are available)

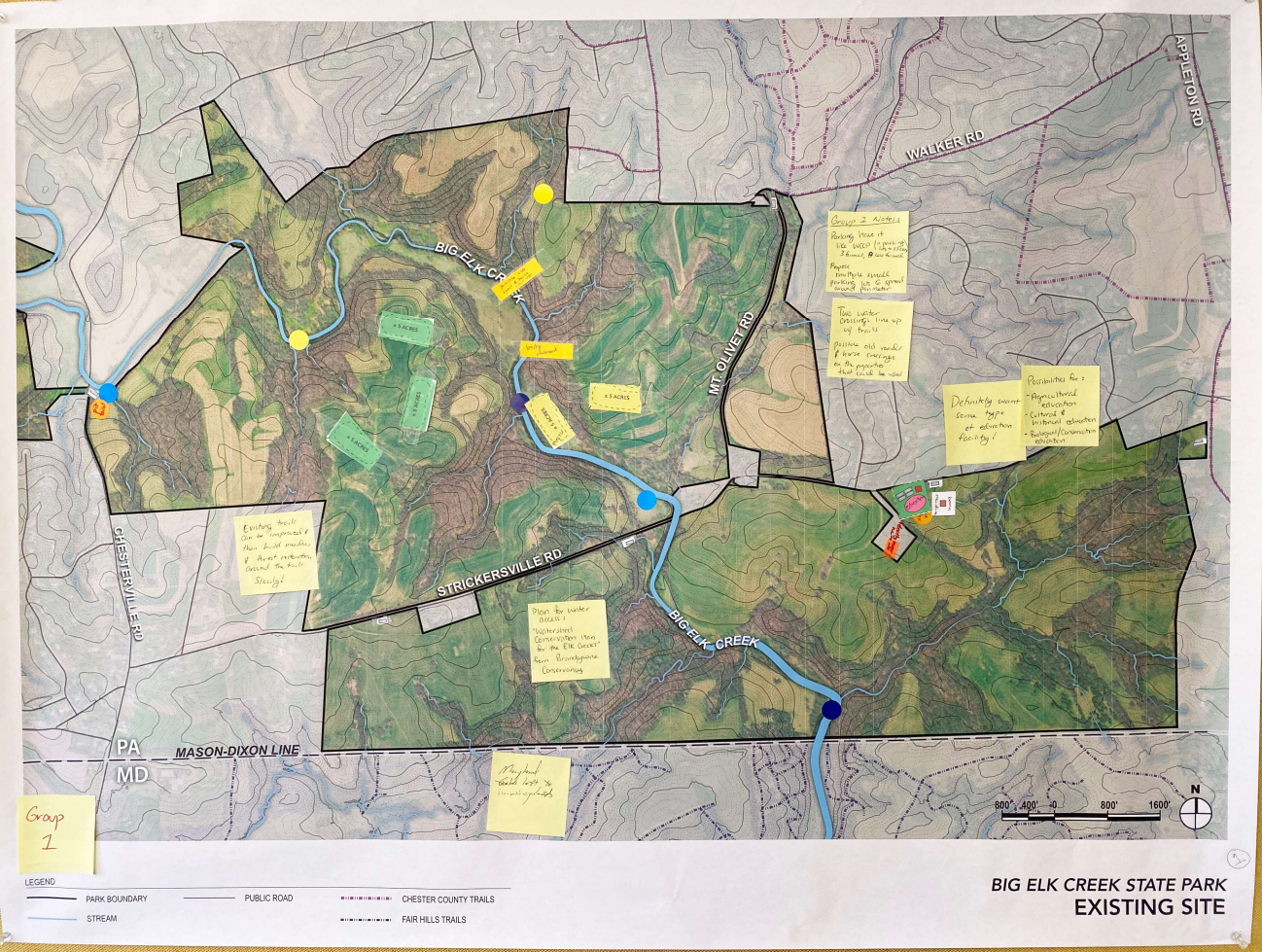


#### MEADOW RESTORATION

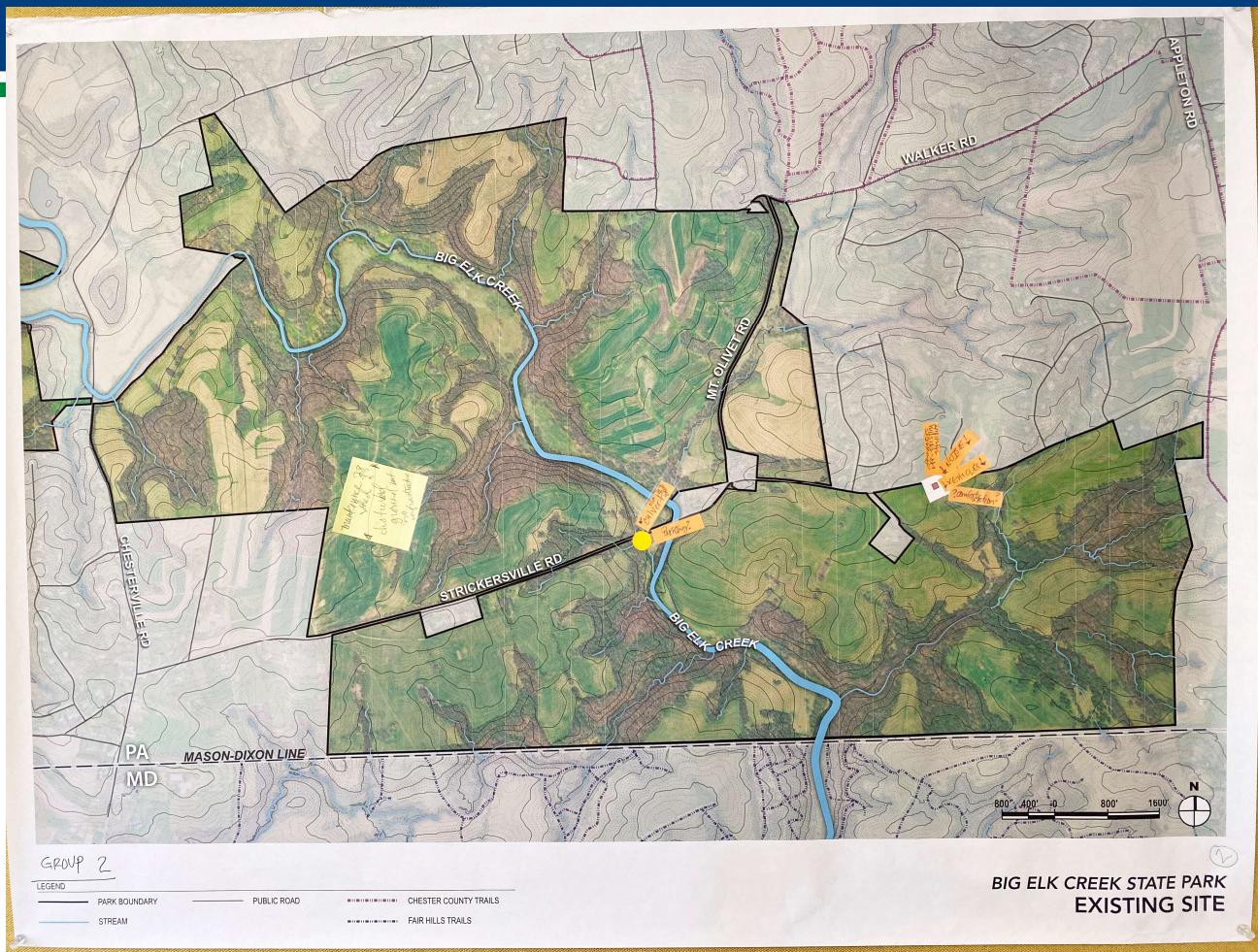
- Designate area(s) for restoring native meadow habitat
- Use as many or as few as you feel is appropriate (more are available)



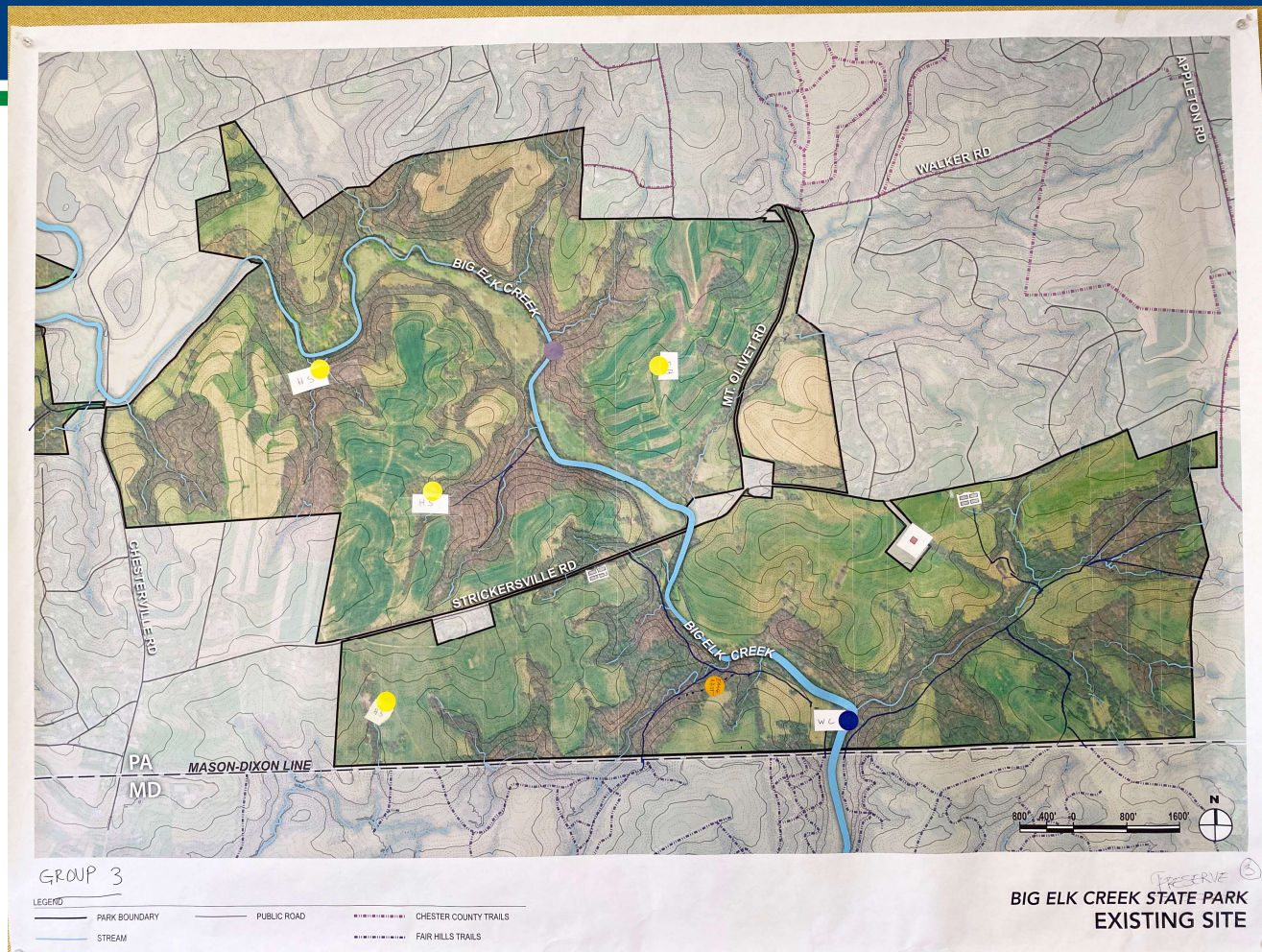
# MAPPING EXERCISE – GROUP 1



# MAPPING EXERCISE – GROUP 2

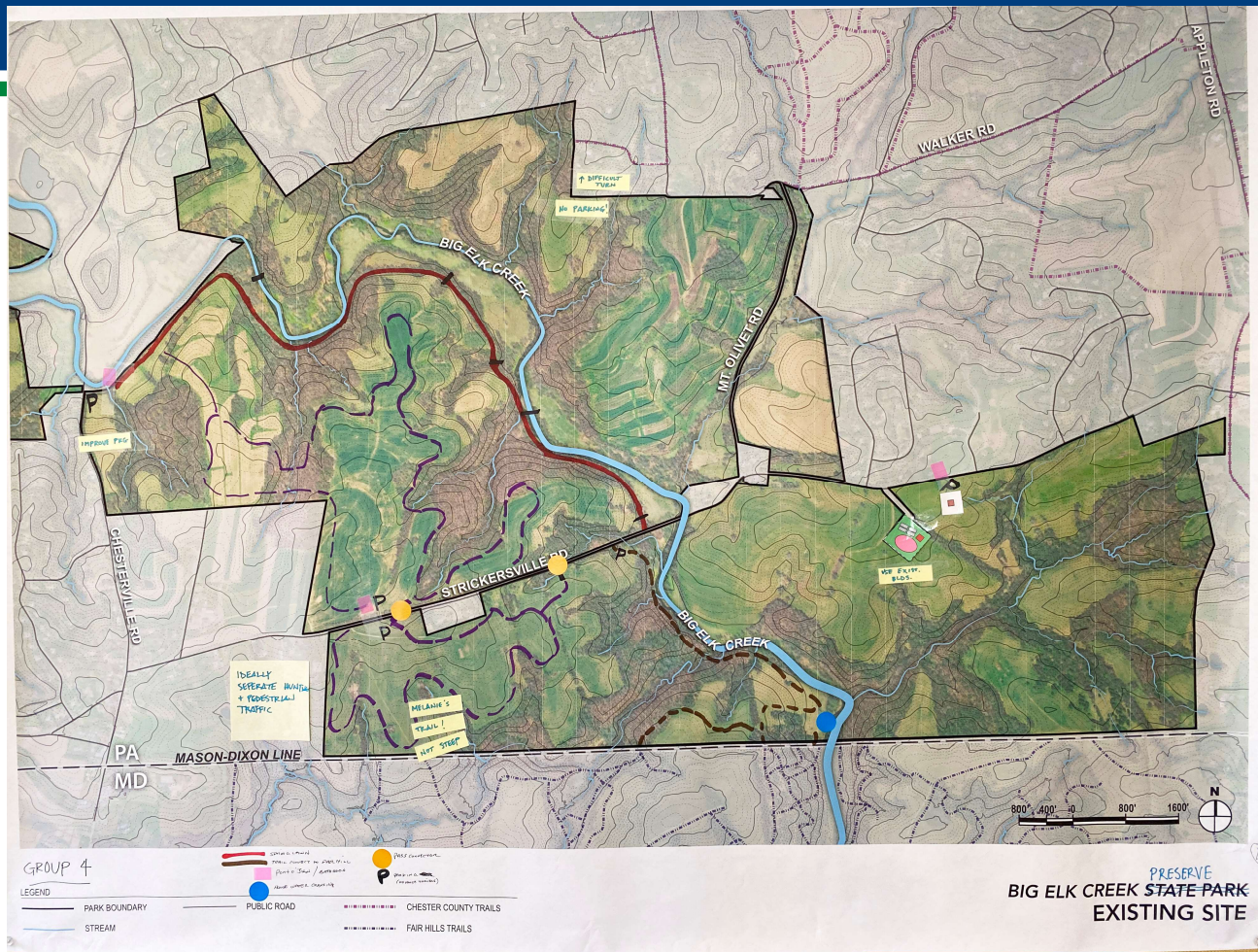


# MAPPING EXERCISE – GROUP 3



BIG ELK CREEK STATE PARK  
EXISTING SITE

# MAPPING EXERCISE – GROUP 4



# TASK FORCE MAPPING EXERCISE



## Shared Concepts

- **Existing Assets** – Utilize existing structures and infrastructure where possible.
- **Co-location** – Locate elements for easy access (such as restroom facilities near parking areas).
- **Crossings** – Maintain / formalize creek crossings to reduce environmental damage at the creek.
- **Restoration** – Pursue appropriate forest and meadow restoration, while incorporating trails.
- **Transitions** – Manage and land use transitions (for instance, agriculture to meadow field or forest) to avoid introduction of invasive plants, now and in the future.
- **Trails** – Upgrade / improve existing trails (creating new only where needed) for easy maintenance and use by a variety of abilities. Remove environmentally inappropriate trails.
- **Impact** – Understand environmental impact as fully as possible prior to implementation of any recommendation.

## Divergence

- **Education Center** – Most felt that having visitor / education / office space within existing building would be ideal, if feasible. Not all agreed such a building is necessary. One group thought that providing a dedicated space for education would be essential.

# TASK FORCE MAPPING EXERCISE



## Specific Ideas and Considerations (mentioned by one or more groups)

- **Existing Parking** – Maintain parking at current “park sign” area on Strickersville Road. This existing parking area is a good spot.
- **Adjacent Property** – Purchase existing inholding (Strawbridge rented property) to repurpose for park/preserve use. If purchasing this property is not feasible, use of existing parking area and former building sites could work. However, these are close to road / neighbors.
- **Parking** – Develop smaller parking areas at distributed and safe locations, rather than fewer larger ones. Improve the western parking area at entrance to Springlawn Trail.
- **Underpasses** – Incorporate existing underpasses (and maintain them to be passable).
- **Water Access** – Provide water access for educational purposes (and perhaps recreation?).
- **Creek Crossings** – Provide creek crossing at southern portion of park near MD border. Provide second creek crossing somewhere (exact location TBD) north of Strickersville, to allow for trail loops.
- **Hunting** – Separate hunting and pedestrian access / main trails.
- **Western Open Space** – Disturbed western area (currently agricultural) was noted has having minimal to no existing infrastructure.
- **Agriculture** – Consider retaining area(s) of agriculture, possibly for educational purposes.